

Pro/ENGINEER® University Plus Edition

The #1 CAD Solution in Academia—Across the Globe

Educators at the world's most prestigious engineering colleges and universities teach Pro/ENGINEER not only because it's easy to learn and affordable to own—but because it's the leading 3D CAD solution in the industry. Today, more than 600,000 professionals, in more than 50,000 companies worldwide, are designing great products with Pro/ENGINEER. Better still, students that graduate with Pro/ENGINEER skills are among the most sought after designers and engineers in global industry.

If your goal is to put your students in the best possible position upon entering the marketplace after graduation—then make Pro/ENGINEER an integral part of your curriculum. With the PTC DesignQuest University Edition, it's both easy and affordable.

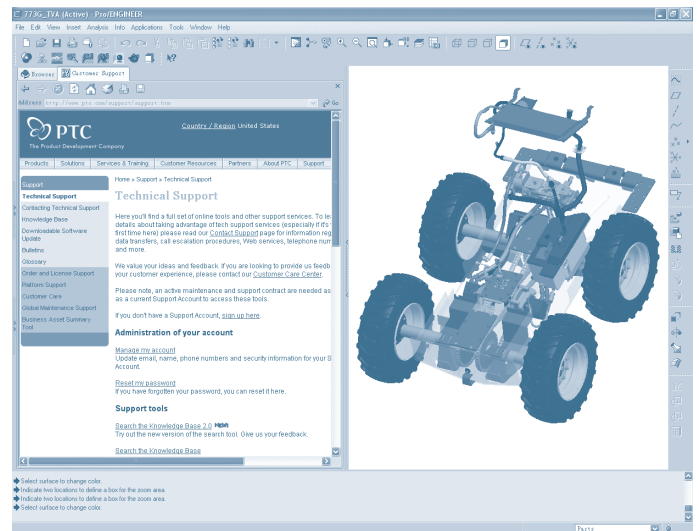
What is Pro/ENGINEER?

Pro/ENGINEER is a parametric, 3D CAD (computer-aided design) software solution created by PTC that provides everything that students need to be successful as professional designers and engineers. With its unmatched capabilities in solid modeling, assembly modeling and drafting, Pro/ENGINEER enables students to quickly and easily build, analyse and test complex 3D models, assemblies and 2D measured drawings.

Pro/ENGINEER was the first 3D CAD tool to introduce the concept of Parametric Modeling, in which attributes of features within the model are 'associated', which means that any change made to one aspect of a design is automatically disseminated to all other facets of the model—instantly—enabling students to design quickly, with absolute confidence.

The Choice of the World's Best Firms

Today, PTC is the undisputed market leader in mechanical design worldwide. Industry-leading customers, such as Toyota, HP, Lockheed Martin, Sony, U.S. Surgical, Caterpillar, Ferrari, and Motorola use our software to continually create innovative new products.



And while PTC wins awards for our service to our customer base, we are just as committed to helping educators on all levels—from secondary school through university—to be successful teaching PTC software solutions in the classroom. Not only do we make our software available to universities at a tremendous discount, but we also make it easy for educators to teach Pro/ENGINEER by providing the training and tools you need to hit the ground running—right out of the box!

The DesignQuest University Program

The PTC DesignQuest University Program is easily the most comprehensive program available to engineering professors and students worldwide. By combining Pro/ENGINEER with other PTC applications, we can deliver a unique and creative experience in design, engineering and technology.

For an affordable membership fee, DesignQuest Universities receive the latest edition of PTC's powerful Pro/ENGINEER® Wildfire® 3D design software, along with complementary PTC applications for campus-wide use. The DesignQuest University program also includes industry-proven training, online resources, expert technical support, and software upgrades. Plus, we enable everyone—professors and students alike—to use the software outside of the classroom for additional teaching purposes, including academic clubs, design competitions, research and industry partnerships, and cross-campus/multi-department use.

PTC software solutions have been incorporated in more than 1300 universities globally, including 50 of the top mechanical engineering universities in the United States alone. The best universities and colleges select this program because it's an unmatched value at an incomparable price.

DesignQuest University Membership Benefits

For an affordable membership fee, members receive:

Teaching Resources

PTC gives educators the tools you need to quickly gain proficiency in Pro/ENGINEER and to easily develop your own curriculum, by including the following training benefits:

- A complimentary seat at a Pro/ENGINEER training class delivered at a PTC Training Location
- Free online tutorials to complement PTC Training Classes
- Free online training, including minidemos, sample exercises, and a Proficiency Evaluator
- Special discounts for professors and students for PTC Certified Professional Program

Pro/ENGINEER University Plus Edition Software

You get the industry's most powerful and most complete design and manufacturing solution with Pro/ENGINEER Wildfire—the software behind thousands of great products and great engineers:

- 500 seats for campus-wide use; use it in the classroom
- Over 50 integrated CAD applications including analysis tools, sheet metal, surface design, visualization, and much more
- Extensive usage in the classroom as well as in academic clubs, competitions, research and industry partnerships, and cross-campus/multi-department programs
- Educational-Commercial Convert License
- Automatic delivery of the latest release updates, plus customer support

University Plus Edition Modules

CAD (Computer-Aided Design) Solutions

- Foundation XE Package: All the powerful functionality students need for part modeling, assembly, surfacing, sheet metal, drawing, and 2D and 3D conversion
- Advanced Assembly Module: Manages components and sub-assemblies for top-down design
- Piping and Cabling Design: Extract logical information from schematics to automate 3D cable and pipe routing
- Interactive Surface Design: Superior free-form surfacing capabilities
- Expert Framework Extension: Reduce the time to create accurate structures, frames, or assembly lines compared to 2D CAD and traditional 3D CAD solid modeling methods.

- Advanced Rendering: Quickly create high-quality, photo-realistic product images
- Routed System Designer: Create 2D schematics for cabling and piping design.
- Complete Machining: A full solution for creating all types of programs for CNC machines used in production environments
- Production Machining: Provides robust NC programming capabilities for production machining applications
- Complete Mold Design: Core, cavity and moldbase design capabilities—all in one package
- Computer-Aided Verification: Allows digital inspections of machined parts and assemblies for quality assurance
- NC Sheetmetal: Automatically create and optimize toolpaths using standard and form tools
- Plastic Advisor: Simulates the plastic-filling process for injection-molded parts
- Progressive Die: Automatically create die sets, documentation, clearance cuts and drilled holes

CAE (Computer-Aided Engineering) Solutions

- Mechanism Dynamics: Virtually simulate reactions to accelerations and the weight of moving components.
- Behavioral Modeling: Embed real-world design requirements in the digital model to perpetually satisfy design criteria.
- Mechanica®: Analyze structural and thermal performance with ease
- Advanced Mechanica: Simulate real-world performance with an expanded set of analysis capabilities
- Fatigue Advisor: Predict and improve the fatigue performance of designs

Additional Solutions

- Pro/INTRALINK®: Manage concurrent design teams, along with all your Pro/ENGINEER data, using this powerful PDM (Product Data Management) solution
- Pro/TOOLKIT® Customization API: Extend, automate and customize your CAD capabilities—from design through manufacturing

Join the DesignQuest University Program Today!

Joining PTC's DesignQuest University Program—or learning more about the program—is easy. In the United States and Canada, simply email us at university@ptc.com or call 781-370-5453. Outside of North America, contact your local PTC sales office. Visit www.ptc.com/go/education for more information.

Copyright © 2008, Parametric Technology Corporation (PTC). All rights reserved. Information described herein is furnished for informational use only, is subject to change without notice, and should not be construed as a guarantee, commitment, condition or offer by PTC. PTC, the PTC logotype, Pro/ENGINEER, Mechanica, Wildfire, Pro/INTRALINK, Pro/TOOLKIT and all PTC product names and logos are trademarks or registered trademarks of PTC and/or its subsidiaries in the United States and in other countries. All other product or company names are the property of their respective owners.